



Ways you can help....

Art Union

Celebrate with our Stars this Art Union

Noeleen Rogers has been a Day Services client with Multicap since 2004, and particularly enjoys the community access programs and activities. One of Noeleen's favourite activities is our Multicap Star Festival where she can enjoy show rides, sausage sizzle, animal farm, face painting, show bags, free entertainment, an art show, and more. See our article inside or visit www.multicap.asn.au for more details about our festival celebrations.



Your donation, large or small, will help Multicap continue to provide programs and activities to clients such as Noeleen. So donate now when you buy your Winter Draw Multicap Art Union tickets and celebrate with our stars. Best of luck!

Congratulations to the following Art Union winners:

- Art Union 87 – Ticket Number 305777 of Beaudesert, Queensland
- Art Union 88 – Ticket Number 258776 of West Footscray, Victoria

For an investment of just \$3 a ticket you have a chance to win a car and also to contribute to Multicap's important work.

TICKET HOTLINE: (07) 3340 9015

Wishing Well Donation Money Boxes

Over 8,000 local businesses now have a Wishing Well donation money box to enable their customers to support local people with multiple disabilities.

For further information on how you can have your own Wishing Well in store, please contact Chris on 0407 737 263.

Carecards

Carecards are available at the Monte Lupo Pottery Shop at Eight Mile Plains. A visit to the shop will also give you the opportunity to view the wonderful Monte Lupo products. If you are unable to visit Monte Lupo you can obtain an order form by phoning 07 3340 9026 or emailing to fionah@multicap.asn.au.

Bequests

Did you know that there are only a few simple steps to make a bequest to Multicap and leave a legacy towards the ongoing work of the Association?

For further information on how you can help, please contact Sandra Williams on (07) 3340 9008.

VOLUNTEERS REQUIRED URGENTLY

- to deliver pre-sold Art Union tickets, 10 hours a week
- for data entry, 1 day a week

For further information, please phone Kevin on 07 3340 9014.

Donations

Your donation, large or small, will help Multicap support people with multiple disabilities, their families and their carers.

Make a Donation

I would like to make a tax deductible donation

- Single Donation \$.....
- Regular Donation \$..... (will be debited each month)

Purchase Art Union Tickets

I would like to order the following ticket books and have a chance to win up to \$64,000 in prizes

- \$15 Book \$21 Book \$30 Book \$60 Book

Advance Order Tickets

I would like to enjoy the convenience of having my ticket order automatically sent each Art Union

- Advance Order \$..... (will be debited each Art Union)

Payment Method

So many easy ways to pay

- Direct Debit Cheque Money Order
- Visa Card Mastercard Debit Card

Direct Debit Details

Account Holder Name:

Bank Name:

BSB: First Payment: /..... /.....

Account:

Signature:

Credit Card Details Payments will continue until cancelled in writing

Card:

Cardholder's Name:

Expiry Date: /.....

Signature:

Your Contact Details

Name:

Company:

Phone:

Email:

Address:

Return to Multicap - Post or Fax to the details below



Our Multicap Star Festival is an important inclusive community event that provides a terrific opportunity for our clients to make a visible and valued contribution in a fun environment that the entire community can enjoy.

Local support and awareness can make a real difference to the way people with a disability participate in community activities, and our Festival is a great way to celebrate all of our stars.

So come and celebrate with us at our Multicap Star Festival celebrations to be held at:

- Rockhampton - a stall at the Heritage Village Markets selling client made items on Sunday, 13 July 2008
- Aspley - a garage sale, sausage sizzle, stalls, and more from 9.00am-12.00noon on Saturday, 12 July 2008
- Petrie - rides, sausage sizzle, stalls, art exhibition, pony rides and more from 1.00pm - 4.00pm on Saturday 12 July 2008
- Kuraby - a disco with sausage sizzle will be held 5.00pm-7.30pm Friday, 18 July 2008
- Eight Mile Plains - rides, sausage sizzle, animal farm, entertainment, and more from 10.30am to 2.30pm on Saturday, 19 July 2008.

Contact Katie Bottom, Events & Partnership Coordinator on **3340 9045** or katieb@multicap.asn.au if you would like to donate items or help on the day, or visit our website www.multicap.asn.au for more information.

Festival Preparations in Rockhampton

The Rockhampton Respite house will be holding a market stall, as part of the Multicap Star Festival. In preparation, the clients and staff are learning how to make circus items to sell on the stall. To enhance their appeal, these are being made with shiny, colourful materials, many of which have been donated. As well as staff and clients who have volunteered to work on the stall on Market Day, the local Lions club will also be assisting.



Sensory Room

The new sensory room at Eight Mile Plains is proving to be a huge success for our clients, especially for those who have high support needs. Even though some clients have found it daunting to begin with, they soon progress past this stage and receive lots of enjoyment from the program, either as an activity, or to promote relaxation or empowerment.

Having the freedom to move and to press, pull and hold objects has had a positive effect on people's health as they are encouraged to reach, stretch and perform movements they would not normally perform.

Queensland Rail Mosaics

Isaac Patmore and the Monte Lupo employees have been working on 55 mosaic panels to be installed at the Lawnton Railway Station in June 2008. The design for the panels explored the local flora, and with the help of Multicap Petrie Day Service and Lawnton Special School, a leaf pattern was designed. All the leaves for the mosaic have been hand-picked from around the Eight Mile Plains site and embossed onto the clay slabs. The employees have also handmade all the small coloured tiles that have been placed around the leaf mosaic. The panels will be placed around the Railway Station to help deter graffiti and vandalism.



North Brisbane Respite Facility

Multicap would like to acknowledge the generous support of the Viertel Foundation, which is managed by ANZ Trustees, in assisting us to develop architectural plans for the new centre-based respite facility we are planning to build in the north Brisbane suburbs. This is a much needed facility that many families have been requesting for some time.

INSIDE THIS ISSUE

CEO's Corner	1
Thankyou	1
New Service at Kuraby	1
Multicap Star Festival	2
Festival Preparations in Rockhampton	2
Sensory Room	2
Queensland Rail Mosaics	2
North Brisbane Respite Facility	2
Toowong Clock Tower	3
Wind in the Sails	3
Centre of Creative Arts Exhibition	3
Jupiters Casino Community Benefit Fund	3
New Mudgeeraba House	3
Vale Warwick Barnett	4
Vietnam Vets	4
Camping Trip	4
Visit to the Circus	4
Mothers' Day Lunch at Kuraby	4
Visit to the 'Crusty Demons'	4
Restrictive Practice	4
Petrie Day Service	5
New Ramp For Petrie	5
New Product Range at Monte Lupo	5
Ways you can help	6

New Service at Kuraby

Deputy Lord Mayor Graham Quirk officially opened our new Day Service based at the Kuraby Community Centre on 27th March 2008. Mr Bruce Milligan, Deputy Director General of Disability Services Queensland, also spoke at the morning tea, which was enjoyed by clients, families, staff and members of the local Kuraby Community. We are appreciative of the support of the Greater Brisbane Region of DSQ and Brisbane City Council in enabling this valuable service to commence.



Multicap's CEO Joanne Jessop, Deputy Lord Mayor Graham Quirk and Deputy Director General of DSQ at the Official opening of the Kuraby Day Service

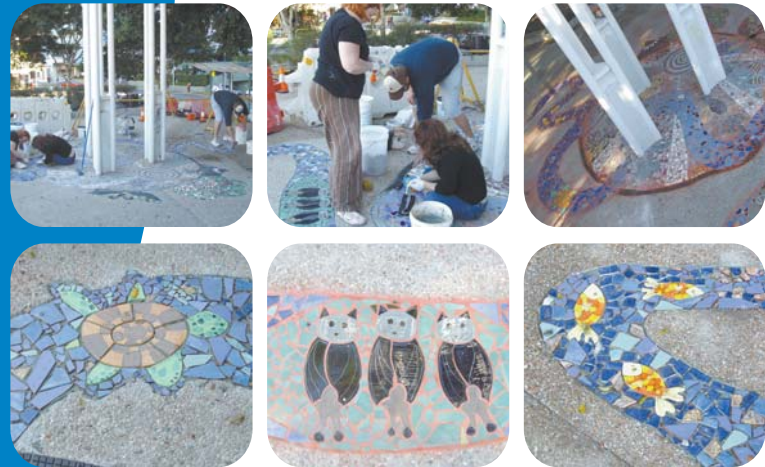
Thank you

Multicap would like to say "thank you" to all the people who support our organisation in many different ways. Our special thanks go to:

- Phillip Cray of National Fire Solutions, David Forde on behalf of the Kuraby Community Group, Mrs Hopkins, Mr Easlea, Patricia Dunn, Margaret Robertson & Roger Livsey of Overgrove Pty Ltd, Dr Neil Heather, and Mr R Gregory for their generous donations.
- Suzie Baguley for her donation of a computer for the Petrie Day Service, Edna Gee for her donation of a garden bench for the Aspley Day Service, and Ian Hamilton of Carroll Consulting for his donation of furniture and office equipment for use throughout the Association.
- Mr & Mrs Studders, Mr & Mrs DeRoode, Mr & Mrs Jeremiah and Mrs Janice Forrest for their contributions to Multicap's Building Fund.

Toowong Clock Tower

Monte Lupo staff and employees have been working with the Brisbane City Council Parks Department to rectify a public mural at Toowong. The Toowong Clock Tower mural had been damaged by tree roots lifting the surrounding concrete. Monte Lupo was asked to retain the design of the mural as much as possible. However once the mural had been lifted, it became obvious that the tiles would not be able to be reused. The Monte Lupo team remade the animals that were featured throughout the Brisbane River mosaic and tried to match the existing mural tiles with new tiles, which had to be smashed and glued into the mural design. This project was a new and exiting venture for Monte Lupo.



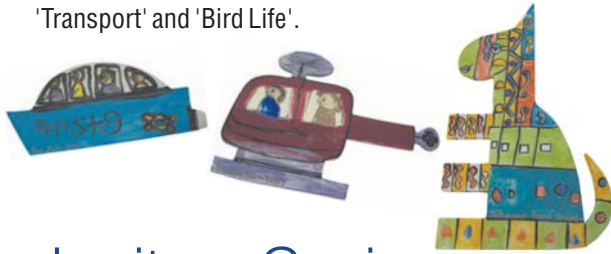
Wind in the Sails

John Logan, who attends the Kuraby Day Service, joined the Sailing program earlier this year and wrote about his first experience on the water. He has since become a very keen sailor and continues to enjoy this program.

sailing was good fun.
We were in Sea Jackets
and sailed in a big
yacht.
I was scared at first
but I soon realised
what was happening
looking at the sails
hoisted up and the
wind blowing them
to power the boat
through the waves.
I really had fun
and felt exhilarated

Centre of Creative Arts Exhibition

The Centre of Creative Arts held its first exhibition during June at the Brisbane City Library. The artists, Heather Pepperill, Johanna Ford, Piers Jeston and Donald Stewart, have all produced amazing wall tiles. They have worked on individual themes including 'Home and Away', 'Fairytale', 'Transport' and 'Bird Life'.



Jupiters Casino Community Benefit Fund

Our clients and staff are very pleased with the improvements we have been able to make in our hydrotherapy area due to the generous support of Jupiters Casino Community Benefit Fund. We have installed a Cardiff Air System in the pool area, solar panels on the roof that are connected to the pool heating system, and we are using the heat exchange system to heat the change rooms in winter and cool them in summer. These improvements, designed by Bronwyn Elliott of Solutions-In-Store and Bill Brazier of Solagift Technologies, are energy efficient and environmentally friendly.

New Mudgeeraba House

Multicap has recently supported one of our clients, Mr Christopher Towner, to relocate into a new Allamanda House at Mudgeeraba. The Allamanda Association design purpose built homes for people with Autism in collaboration with the Department of Housing. Christopher worked with his support team to successfully transition to the service site. The transition went smoothly and Christopher has settled in extremely well. Multicap is currently engaging with Disability Services Queensland to identify some possible co tenants for Christopher. The staff at Mudgeeraba have also received a memorandum of understanding from the Allamanda Association to assist staff and Allamanda to develop a positive working relationship.



Vale Warwick Barnett

Earlier this year, the Multicap family was saddened to hear of the death of Warwick Barnett, whose son attends Multicap's Westside Day Service at Ellen Grove and also F.I.R.S.T. Our thoughts have been with his family during this time and our thanks go to all those who made donations in his memory. The donated funds are being shared between Multicap's Day Service at Ellen Grove and F.I.R.S.T.

Vietnam Vets

The Vietnam Veterans Association (Qld) hosts a yearly function for Multicap clients at their club rooms in Kingston. In the last Insight Newsletter we wrote about the day of activities, fun and entertainment, which occurred in February. To follow on from that story we have included some pictures of the day, which have been kindly provided by the Vietnam Vets.



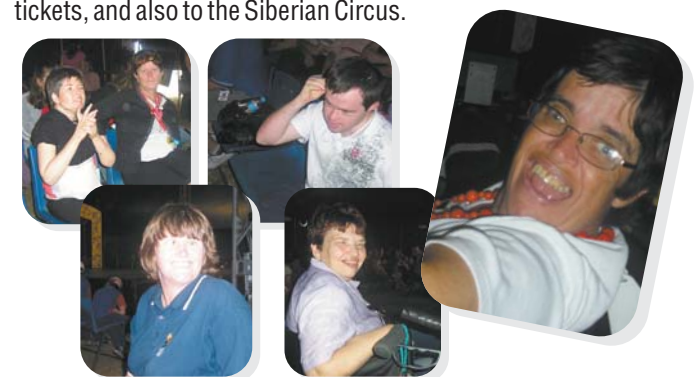
Camping Trip

Pictured below are Mackay residential clients, Scott Adams, Gio Faletto, Albert Bull, Warren Gardner, Mickey Turnbull and Brendon Smith, enjoying a recent camping holiday at Boulder Creek.



Visit to the Circus

Last month, some clients from the Southside Day Service visited the circus. What a spectacular adventure for each client! The smile on their faces said it all. There were many performers including acrobats, jugglers, trapeze artists and the clowns - which appeared to be everyone's favourite. The environment was wonderful and everyone was welcomed with a happy smile and a bag of lollies. A big thank you to the Macgregor Lions Club for the tickets, and also to the Siberian Circus.



Mothers' Day Lunch at Kuraby

On Friday 9th May staff and clients at Kuraby Day Service celebrated Mothers' Day by hosting a brunch for the Kuraby families. All clients participated in the preparation, from cooking through to having input into the Mothers' Day gifts. Everyone had a very enjoyable day.



Visit to the 'Crusty Demons'

The extreme sport of freestyle motocross came to Mackay in May as the 'Crusty Demons' visited the town as part of their regional tour. Albert Bull, a Multicap Mackay residential client, was very excited to be able to go to their show.



Albert and his carer Chez waiting to go into the Crusty Demons

Restrictive Practice

The use of restrictive practices in Queensland disability services was reviewed in 2006 by retired Judge the Hon William Carter. He made a number of recommendations and these form the basis of a new law that will come into effect on 1 July 2008. This law will regulate restrictive practices in a way that:

- seeks to reduce or eliminate their use;
- has regard to the human rights of the person;
- is necessary for the safety of the person or other people and is the least restrictive option of ensuring their safety;
- is independently authorized and reviewed; and
- focuses on the person's individual needs.

What Are Restrictive Practices?

- Containment and seclusion
- Chemical restraint
- Physical restraint
- Mechanical restraint
- Restricting access

Who Does it Apply To?

Any person (18 years or over) with an intellectual or cognitive disability and challenging behaviour who receives a disability service from a Disability Services Queensland funded, or DSQ provided, service. In Multicap it applies to people 18 and over accessing any of the following: day services, respite services, supported accommodation.

Who Authorises Restrictive Practices?

Containment and seclusion can only be authorized by the Guardian & Administration Tribunal. For the majority of other restraints, an Adult Guardian for Restrictive Practice will be appointed to make decisions around the use of restraint/s.

If you have any questions about this article please contact Diane Bell, Accommodation & Respite Manager on 3340 9017.

Petrie Day Service



Community Garden: During the last month the chooks at Petrie have started laying eggs and this has brought much excitement from the local community; as well as from our cooking and catering program. We are averaging approximately 3 eggs per day and, with the mini lettuces, herbs and other green vegetables currently growing in the community garden, we are all enjoying fresh salads and sandwiches.



Star Festival: Activities are focusing on preparation for the Multicap Star Festival. An artist has been assisting our clients to produce awesome artwork for the Art and Craft Exhibition. Also, donations are coming in for the Trash and Treasure stall to be held during the festival. Thank you to everyone collecting and delivering goods to us.

Monte Lupo Petrie Shop: A new pottery workshop has commenced for clients at Petrie Park and clients are also working on producing some of their own work for retail. These include Tidy Bins for the car, Australian bookmarks, sensory bags for tired mums, cake baking and jewellery making.

Moving On: One of the main aims for Petrie is to assist participants to transition through our programs; and we are very pleased to say that, to date, we have assisted two clients to move onto supported employment and independent living.



Gym Program: The Gym continues to be well attended and the results have been very pleasing.

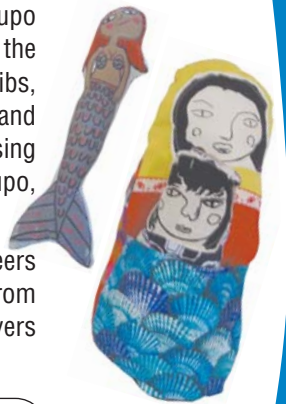
New Ramp For Petrie

The building which houses Day Services and the Monte Lupo shop at Petrie has been given a welcome addition in the form of an entrance ramp. The ramp is designed to meet stringent regulations so that all people who find steps a challenge can now enter the building with ease. Jill and her team will also contribute to landscaping the ramp area and are excited that they can now offer services to people with disabilities who are dependent on wheelchairs for mobility.

New Product Range at Monte Lupo

Monte Lupo is now creating fabric art in the new textile area. Melissa Booth is the driving force behind the crazy creations. The Monte Lupo employees and craft volunteers assist in the making of all the products which include baby bibs, kid's aprons, babushka dolls, mermaid dolls and bags. The new products, which are made using donated items, can be purchased at Monte Lupo, Eight Mile Plains and Monte Lupo Petrie.

If you are interested in joining the craft volunteers or donating craft items we would love to hear from you. Information can be obtained from the flyers below.





Any person wishing to join the
Community Craft Collective
Please ring 3340 9026

You can bring your own craft or assist in making Monte Lupo dolls and mermaids

The Community Craft Collective runs every 2nd
Wednesday of the month at
the Monte Lupo Studio 259 Padstow Rd
Eight Mile Plains

Please come and enjoy the craft and company over a hot cuppa and hopefully find the inspiration you need through working in a collective






Monte Lupo is a Multicap employment service for people with disabilities

disabilities, capabilities... possibilities

Cleaning out your craft cupboard????

Why not donate your craft bits and pieces to

Monte Lupo

We need

Buttons

Lace

Wool

Fabric

Cotton



Ribbons

Dyes

Elastic

Paints

Brushes

Deliver to Monte Lupo at
269 Padstow Rd
Eight Mile Plains
or
Phone 3340 9027

